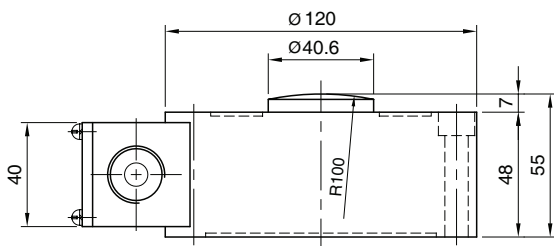
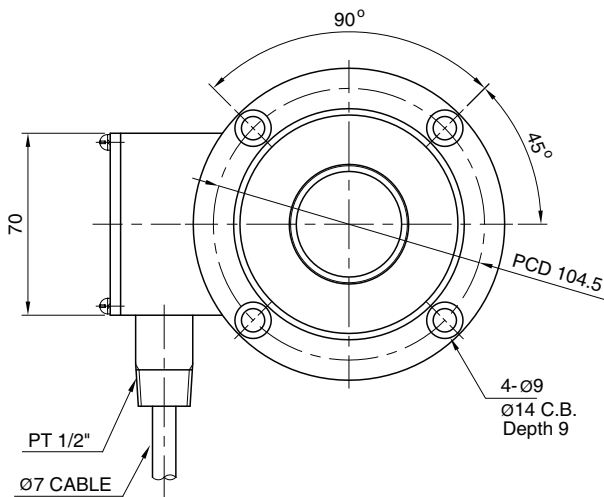


Model CS99 Series

Compression
Low Profile Load Cell (20ton)



The model CS99 is designed for heavy duty weighing applications and testing systems. All units are machined from a solid billet and sealed with welded diaphragms.

- Hermetically sealed
- High rated output(3mV/V)
- Insensitive to side load
- Low profile

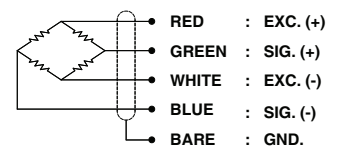
SPECIFICATIONS

MODEL	CS99
Rated capacity (R.C.)	20 ton
Rated output (R.O.)	3mV/V ± 0.005
Non-linearity	≤ 0.03% R.O.
Hysteresis	≤ 0.03% R.O.
Non-repeatability	≤ 0.03% R.O.
Creep error	≤ 0.03% in 20min.
Zero balance	≤ 1% R.O.
Compensated temperature range	-10 ~ 90 °C
Operating temperature range	-20 ~ 100 °C
Temp. effect on rated output	≤ 0.03% LOAD/10°C
Temp. effect on zero balance	≤ 0.03% R.O./10 °C
Terminal input resistance	350 Ohms ±3.5 Ohms
Terminal output resistance	350 Ohms ±3.5 Ohms
Insulation resistance (Min.)	2000 MOhms at 50V DC
Excitation voltage	10V(Recommended), 15V(Maximum)
Electrial connection	Ø7mmx5m, 10m (22AWG x 4C)
Protection class	meets IP 67
Safe overload	150% R.C
Ultimate overload	300% R.C
Material	Stainless Steel

ORDERING INFORMATION

CS99 - 20T
 MODEL CAPACITY
 CS99 20ton

WIRING INFORMATION



Dimension-mm