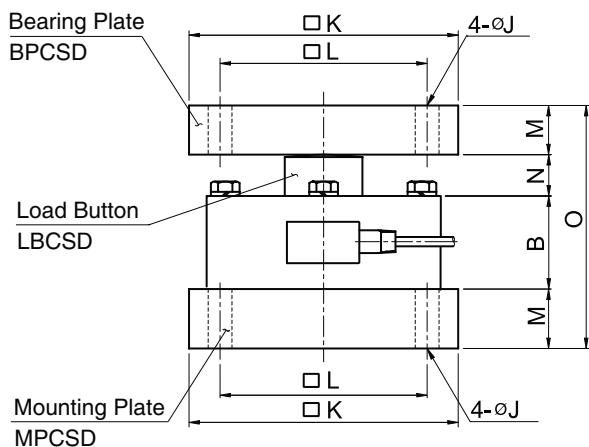
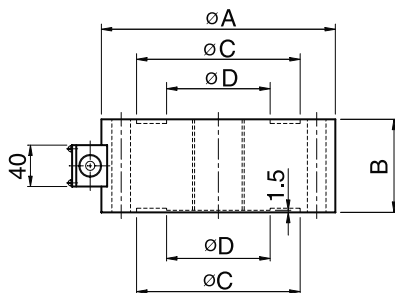
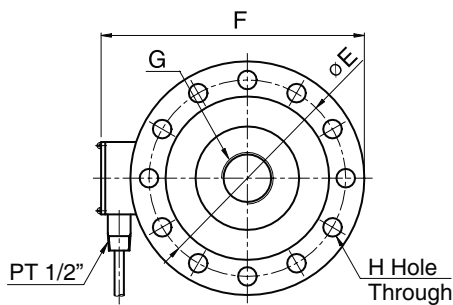


Model CSDH Series

Compression

Low Profile Load Cell(30t ~ 100t)



Dimension-mm

Capacity	A	B	C	D	E	F	G	H	J	K	L	M	N	O	Load Button	Bearing Plate	Mounting Plate	Weight (kg)
30, 50t(294.2, 490.3 kN)	226	90	158	100	190	268	M50x 2P	12-ø18	23	260	200	47.5	40	225	LBCSD1	BPCSD1	MPCSD1	23
100t(980.7 kN)	306	110	212	138	260	350	M76x 3P	16-ø23	27	360	280	57.5	50	275	LBCSD2	BPCSD2	MPCSD2	48

The model CSDH is a low profile compression shear type load cell suited to precision applications where headroom and side loads are a problem. All units are machined from a solid billet of tool steel and sealed with welded diaphragms.

- Hermetically sealed
- High rated output(3mV/V)
- Low profile

SPECIFICATIONS

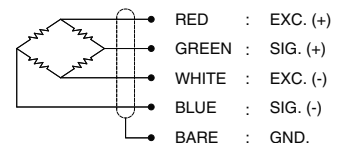
MODEL	CSDH
Rated capacity (R.C.)	30, 50, 100t
Rated output(R.O.)	3mV/V ± 0.3%
Non-linearity	≤0.1% R.O.
Hysteresis	≤0.1% R.O.
Non-repeatability	≤0.05% R.O.
Creep error	≤0.03% in 20min.
Zero balance	≤1% R.O.
Compensated temperature range	-10 ~ 70°C
Operating temperature range	-20 ~ 80°C
Temp. effect on rated output	≤0.03% LOAD/10°C
Temp. effect on zero balance	≤0.03% R.O./10°C
Terminal input resistance	350 Ohms ± 3.5 Ohms
Terminal output resistance	350 Ohms ± 5 Ohms
Insulation resistance (Min.)	2000 MOhms at 50V DC
Excitation voltage	10V(Recommended), 15V(Max.)
Electrical connection	ø9mmx5m(22AWG x 4Core Shielded)
Protection class	meets IP 67
Safe overload	150% R.C
Ultimate overload	300% R.C

ORDERING INFORMATION

CSDH - 30T

MODEL: CSDH CAPACITY: 30, 50, 100ton

WIRING INFORMATION



* Specifications are subject to change without notice

JAN, 2010

BONGSHIN LOADCELL CO., LTD.

148, SANGDAEWON-DONG, JUNGWON-KU, SEONGNAM-CITY, GYEONGGI-DO, KOREA
 TEL : 82-31-742-6661 www.bongshin.com
 FAX : 82-31-742-6664 E-mail : loadcell@bongshin.com