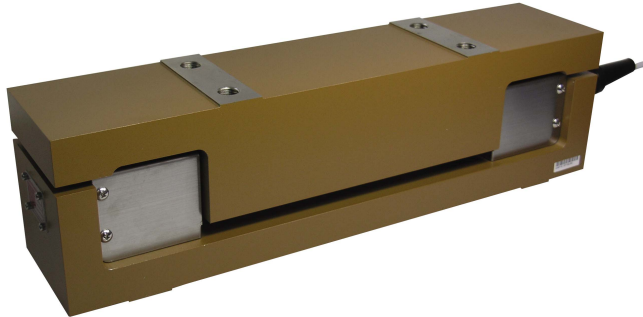


Model BTV Series

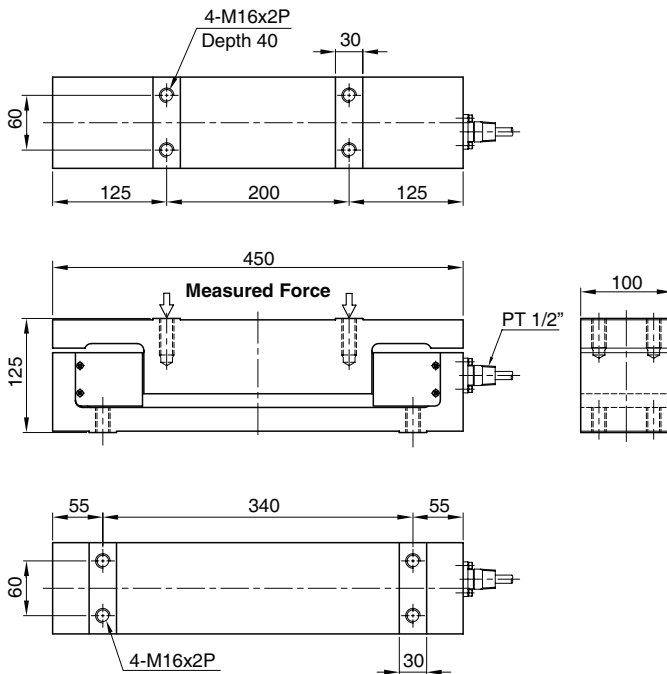
Pillow Block Type Load Cell
(Vertical force 50kN ~ 100kN)



The BTV series, used in metal processing lines and other hostile industrial applications, accurately and reliably measure strip tension, and are designed to mount directly under the roll bearing pillow blocks.

- Overload capability of 450% of rated capacity without zero shift.
- Excellent linearity from zero through the entire measuring range.
- Electroless nickel plated for corrosion resistance and fully sealed to IP67
- Full temperature compensation.

BTV - 50, 70, 100kN



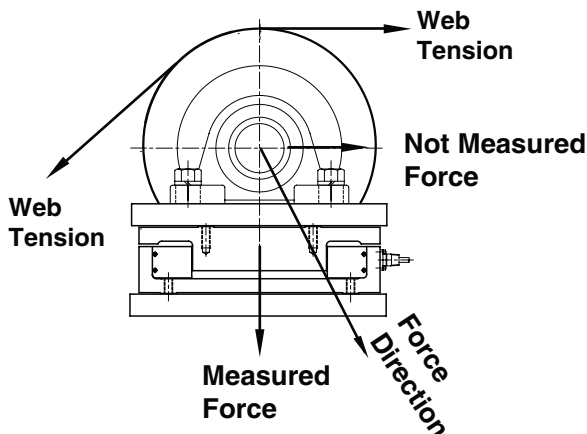
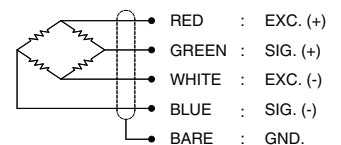
SPECIFICATIONS

| MODEL | BTV |
|-------------------------------|---------------------------------|
| Rated capacity (R.C.) | 50, 70, 100kN |
| Rated output(R.O.) | 1.0mV/V ± 0.25% |
| Non-linearity | ≤ 0.2% R.O. |
| Hysteresis | ≤ 0.2% R.O. |
| Non-repeatability | ≤ 0.1% R.O. |
| Creep error | ≤ 0.1% in 20min. |
| Zero balance | ≤ 1% R.O. |
| Compensated temperature range | -10 ~ 70°C |
| Operating temperature range | -20 ~ 80°C |
| Temp. effect on rated output | ≤ 0.03% LOAD/10°C |
| Temp. effect on zero balance | ≤ 0.03% R.O./10°C |
| Terminal input resistance | 700 Ohms ± 3.5 Ohms |
| Terminal output resistance | 700 Ohms ± 5 Ohms |
| Insulation resistance (Min.) | 2000 MOhms at 50V DC |
| Excitation voltage | 10V(Recommended), 15V(Max.) |
| Electrical connection | Ø9mmx6m(22AWG x 4Core Shielded) |
| Protection class | meets IP 67 |
| Safe overload | 450% R.C |
| Ultimate overload | 800% R.C |

ORDERING INFORMATION

| BTV | - | 50kN |
|-------|---|----------------|
| MODEL | | CAPACITY |
| BTV | | 50kN(5.098tf) |
| | | 70kN(7.138tf) |
| | | 100kN(10.20tf) |

WIRING INFORMATION



* Specifications are subject to change without notice

JAN, 2010