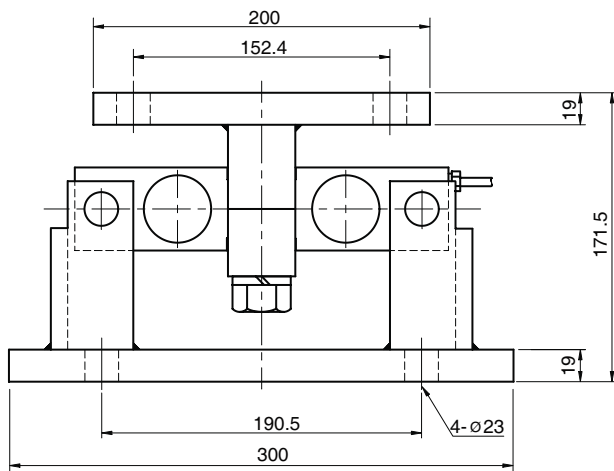
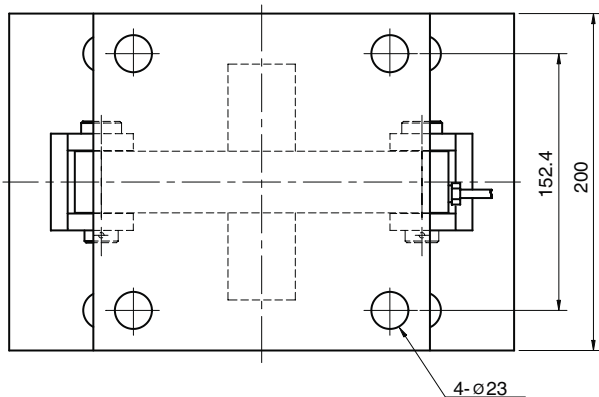


Weigh Module

Model BMD Series

Specially Designed For
Hopper And Tank (5t ~15t)

- Mounts directly to the floor or structural support.
- Self checking with provisions for thermal expansion and contraction.



SPECIFICATIONS

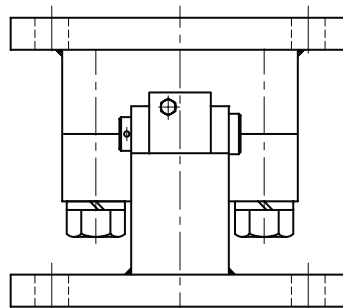
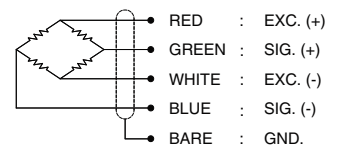
MODEL	BMD11
Rated capacity (R.C.)	5, 10, 15 t
Rated output(R.O.)	3mV/V ± 0.25%
Non-linearity	≤0.03% R.O.
Hysteresis	≤0.03% R.O.
Non-repeatability	≤0.03% R.O.
Creep error	≤0.03% in 20min.
Zero balance	≤1% R.O.
Compensated temperature range	-10 ~ 70°C
Operating temperature range	-20 ~ 80°C
Temp. effect on rated output	≤0.02% LOAD/10°C
Temp. effect on zero balance	≤0.03% R.O./10°C
Terminal input resistance	700 Ohms ±10 Ohms
Terminal output resistance	700 Ohms ±7 Ohms
Insulation resistance (Min.)	2000 MOhms at 50V DC
Excitation voltage	10V(Recommended), 15V(Maximum)
Electrial connection	ø7mmx6m(22AWG x 4Core Shielded)
Protection class	meets IP 67
Safe overload	150% R.C
Ultimate overload	300% R.C

ORDERING INFORMATION

BMD11 - **5T**
CAPACITY
5, 10, 15t

BMD11 : CDBH Load Cell + Zinc Plated Steel Mtg Kit

WIRING INFORMATION



* Specifications are subject to change without notice

JAN. 2010