

Model CS99A Series

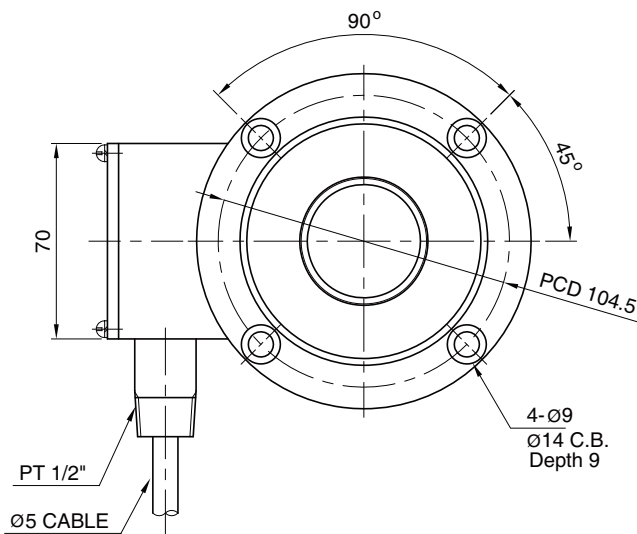
Compression
Low Profile Load Cell (30ton)

The model CS99A is designed for heavy duty weighing applications and testing systems. All units are machined from a solid billet and sealed with welded diaphragms.

- Hermetically sealed
- High rated output (3mV/V)
- Insensitive to side load
- Low profile

SPECIFICATIONS

| MODEL | CS99A |
|-------------------------------|----------------------------------|
| Rated capacity (R.C.) | 30 ton |
| Rated output (R.O.) | 3mV/V ± 0.005 |
| Non-linearity | ≤ 0.05% R.O. |
| Hysteresis | ≤ 0.05% R.O. |
| Non-repeatability | ≤ 0.05% R.O. |
| Creep error | ≤ 0.03% in 20min. |
| Zero balance | ≤ 1% R.O. |
| Compensated temperature range | -10 ~ 80 °C |
| Operating temperature range | -20 ~ 100 °C |
| Temp. effect on rated output | ≤ 0.03% LOAD/10 °C |
| Temp. effect on zero balance | ≤ 0.03% R.O./10 °C |
| Terminal input resistance | 350 Ohms ±3.5 Ohms |
| Terminal output resistance | 350 Ohms ±3.5 Ohms |
| Insulation resistance (Min.) | 2000 MOhms at 50V DC |
| Excitation voltage | 3~12V(Recommended), 15V(Maximum) |
| Electrical connection | Ø5mm x 10m (22AWG x 4C) |
| Protection class | meets IP 67 |
| Safe overload | 150% R.C |
| Ultimate overload | 300% R.C |
| Material | Stainless Steel |

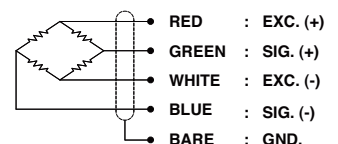


ORDERING INFORMATION

CS99A - 30T

MODEL CAPACITY
CS99A 30ton

WIRING INFORMATION



Dimension-mm

* Specifications are subject to change without notice

APR, 2026

BONGSHIN LOADCELL CO., LTD.

55, Seobuk-ro, Gajang Ind. Complex, Osan-si, Korea / 18103
TEL : 82-31-742-6661 www.bongshin.com
FAX : 82-31-742-6664 E-mail : loadcell@bongshin.com